



Model 660 and 660-L Thief Hatches

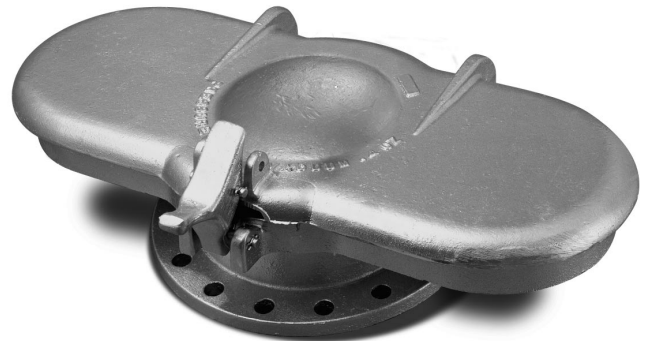
The Model 660 spring loaded thief hatch is designed with a round base and cover. It is intended for use on steel and fiberglass tanks which require a tighter seal for reduced vapor loss.

Model 660



The Model 660-L is a spring loaded thief hatch designed with a long basin and cover. The long basin serves as a thief shelf. The design also includes an inclining base to keep the basin level.

Model 660-L



Valve Setting Range

Model	Bolt Pattern	Pressure	Vacuum
Model 660	10-3/8" Circle API	2, 3, 4, 6, 8, 12, 16, 24 and 32 oz.	0.4, 0.9 and 3.5 oz.
Model 660-L	10-3/8" Circle API	2, 3, 4, 6, 8, 12, 16, 24 and 32 oz.	0.4, 0.9 and 3.5 oz.

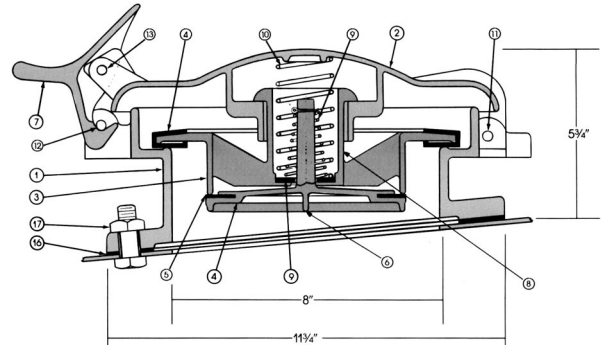
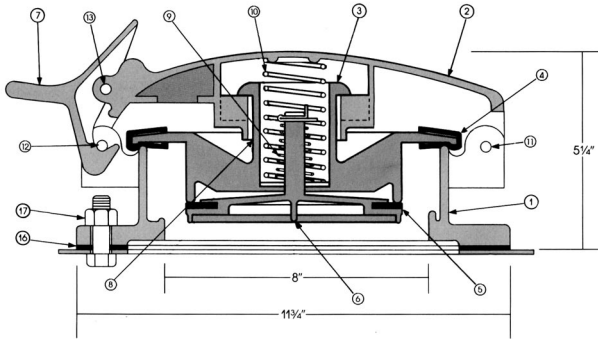
Materials of Construction

Model	Construction	Optional Equipment	Shipping Weight
Model 660	Aluminum castings (non-sparking)	Plastic Trim (PT), Base Gasket, Bolt Set, Non-Corrosive Coating	25 lbs. (approx.)
Model 660-L	Aluminum castings (non-sparking) Ductile Iron	Plastic Trim (PT), Base Gasket, Bolt Set, Non-Corrosive Coating	45 lbs. (approx.)



ENARDO Hatches

Model 660 and 660-L Thief Hatches



MODEL 660

Ref.	Part No.	Part Name	Material	Quan.
1	61A	Base	Cast Alumn.	1
2	63	Cover	Cast Alumn.	1
3	72SA	Center (see Cntr Assy)	Assembly	1
*3	72SA 1-PT	Center (see Cntr Assy)	Plastic Assembly	1
4	70-H	Envelope PressureGasket	Nitrile	1
*4	70-HV	Envelope Pressure Gasket	Viton	1
5	74-G	Vacuum Gasket	Buna N	1
*5	74-GV-SP	Vacuum Gasket	Viton Sponge	1
6	64-F	Vacuum Disc	Cast Alumn.	1
7	9	Latch	Cast Alumn.	1
8	72	Center	Cast Alumn.	1
9	660- VS-1/2	Vacuum Spring	Plated	1
*9	660-VS-1/2I	Vacuum Spring	Inconel	1
10	660-PS-4	Pressure Spring	Plated	1
*10	660-PS-4I	Pressure Spring	Inconel	1
11	5-0	Cover Hinge Pin	CRS Plated	1
12	5-F	Latching Pin	CRS Plated	1
13	5-C	Latch Pin	CRS Plated	1
+16	660-BG	Base Gasket	Tank Packing	1
+17	1 /2- 13 x 1 - 1/2	Bolt, Hex	Plated	16
+17	1/2-13	Nut, Hex	Plated	16
19	HCP-148	Hinge Pin Clip	Plated	6

* Plastic Trim Series Furnished Upon Request Only -
For Sour Gas
+Furnished Upon Request Only

MODEL 660-L

Ref.	Part No.	Part Name	Material	Quan.
1	61LC	Base	Cast Iron	1
2	63L	Cover	Cast Alumn.	1
3	72SA1	Center (see Cntr Assy)	Assembly	1
*3	72SA 1-PT	Center (see Cntr Assy)	Plastic Assembly	1
4	70-H	Envelope PressureGasket	Nitrile	1
*4	70-HV	Envelope Pressure Gasket	Viton	1
5	74-G	Vacuum Gasket	Buna N	1
*5	74-GV-SP	Vacuum Gasket	Viton Sponge	1
6	64-F	Vacuum Disc	Cast Alumn.	1
7	9	Latch	Cast Alumn.	1
8	72	Center	Cast Alumn.	1
9	660- VS-1/2	Vacuum Spring	Plated	1
*9	660-VS-1/2I	Vacuum Spring	Inconel	1
10	660-PS-4	Pressure Spring	Plated	1
*10	660-PS-4I	Pressure Spring	Inconel	1
11	5	Cover Hinge Pin	CRS Plated	1
12	5-N	Latching Pin	CRS Plated	1
13	5-C	Latch Pin	CRS Plated	1
+16	660-BG	Base Gasket	Tank Packing	1
+17	1 /2- 13 x 1 - 1/2	Bolt, Hex	Plated	16
+17	1/2-13	Nut, Hex	Plated	16

* Plastic Trim Series Furnished Upon Request Only -
For Sour Gas
+Furnished Upon Request Only